

# ZyWALL Remote Security Client



## Recommended for

- Home users and telecommuters accessing a corporate VPN from a desktop PC or laptop while using dial-up or high-speed cable/DSL connections
- Mobile users who require remote access to a corporate VPN through a dial-up connection while traveling with a laptop
- Extranet partners needing to gain secure access to a partner's corporate network

## Features

### Encryption

- DES, 3DES, and AES

### Hash Algorithms

- HMAC-MD5, HMAC-SHA-1, DES-MAC

### Compression

- IPComp —  
Deflate and plug-in support for LZS

### Diffie Hellman Group Support

- Group 1 — MODP 768
- Group 2 — MODP 1024
- Group 5 — MODP 1536

### Authentication Mechanisms

- Preshared keys, RSA Signatures

### Key Management

- IKE (Internet Key Exchange)

### IPSec Modes

- Tunnel, Transport

### IKE Modes

- Main, Aggressive, Quick

### Certification

- SCEP, PKCS #7 and PKCS #10, PKCS #12
- X.509 V3 Support

- LDAP Directory Support

- CRL Processing

- Self-signed Certificate Support XAUTH
- Microsoft Internet Explorer

### Stated CA Compatibility

- Entrust, Baltimore Technologies, VeriSign, RSA Keon, Microsoft, Netscape

### Maintenance

- Centralized Policy Management
- Audit Log

## System Requirements

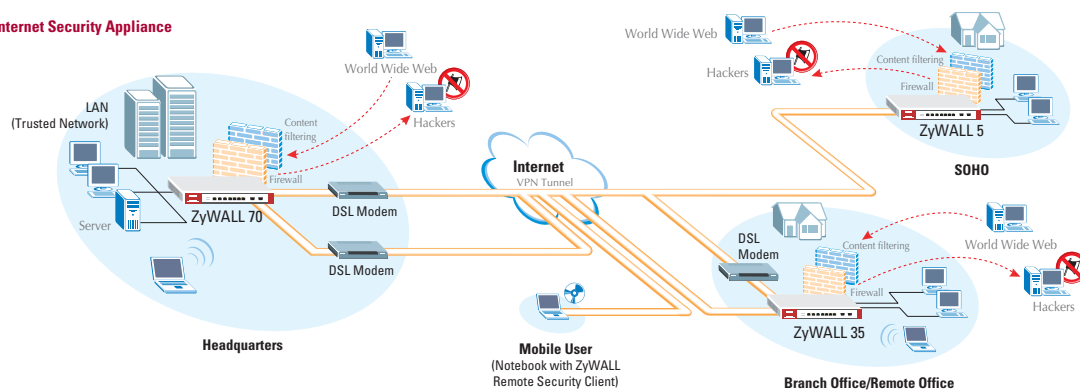
- Disk Space — 10 MB
- 16MB RAM for Windows 95, 98
- 32 MB RAM for NT, 64 MB for ME and 2000
- 64 MB for XP

## Ordering Information

- You can buy ZyWALL Remote Security Client with 1, 5, 10 or 50 licenses

## Application Diagram

### Internet Security Appliance



## Models Supported

Model Name	ZyWALL 2	ZyWALL 5	ZyWALL 35	ZyWALL 70
<b>Performance</b>				
Firewall Throughput	12Mbps	80Mbps	90Mbps	100Mbps
VPN 3DES/AES Throughput	2.2Mbps	25Mbps	40Mbps	50Mbps
User Licenses	Unlimited	Unlimited	Unlimited	Unlimited
Concurrent Sessions	1,024	6,000	10,000	12,000
Simultaneous IPSec VPN connection	2	10	35	100
<b>Physical Specification</b>				
Ports (10/100Mbps Auto sensing & MDI/MDIX)	4xLAN, 1xWAN	4xLAN/DMZ, 1xWAN	4xLAN/DMZ, 2xWAN	1xLAN, 4xDMZ, 2xWAN
Extension Card Slot	-	•, Wireless and Optional Services*	•, Wireless and Optional Services*	•, Wireless and Optional Services*
RS-232 console	•	•	•	•
Power Supply	12VDC	12VDC	12VDC	100 ~ 240VAC
Rack-Mounted	-	•	•	•
Wall-Mounted	•	•	•	-
Dimensions (LxDxH, mm)	181 x 128 x 36	242 x 175 x 35.5	242 x 175 x 35.5	355 x 200 x 55
Weight	330g	1,200g	1,200g	2,600g
<b>Mode of Operation</b>				
Routing/NAT/SUA Mode	•	•	•	•
Transparent Mode	-	•	•	•
Dial Backup	•	•	•	•
<b>Firewall (ICSA Certified)</b>				
IP Protocol/Packet Filter	•	•	•	•
DoS and DDoS protections	•	•	•	•
Stateful Packet Inspection	•	•	•	•
Transparent Firewall	-	•	•	•
Web Content Filtering	•	•	•	•
<b>VPN (ICSA Certified)</b>				
Manual key, IKE	•	•	•	•
PKI (X.509)	•	•	•	•
Encryption (DES, 3DES and AES)	•	•	•	•
Authentication (SHA-1 and MD5)	•	•	•	•
IPSec NAT Traversal	•	•	•	•
Xauth User Authentication (Internal Database and External RADIUS)	•	•	•	•
<b>Traffic Management</b>				
Guaranteed/Maximum Bandwidth	-	•	•	•
Policy-based Traffic shaping	-	•	•	•
Priority-bandwidth utilization	-	•	•	•
<b>High Availability (HA)</b>				
Auto fail-over, fail-back	•	•	•	•
Dial Backup	•	•	•	•
Dual WAN ports for WAN backup and Load Balance	-	-	•	•
<b>System Management</b>				
WebGUI (HTTP and HTTPS)	•	•	•	•
Firmware Upgrade (WebGUI, TFTP/FTP/SFTP)	•	•	•	•
Vantage CNM	•	•	•	•
<b>Wireless</b>				
IEEE 802.11b Compliant	-	•	•	•
IEEE 802.11g Compliant	-	•	•	•
IEEE 802.1x Authentication (Internal Database and External RADIUS)	-	•	•	•
<b>Logging/Monitoring</b>				
Centralized Logs	•	•	•	•
Attack alert	•	•	•	•
System status monitoring	•	•	•	•

(\*) For future release



#### Corporate Headquarters

**ZyXEL Communications Corp.**  
Tel: +886-3-578-3942  
Fax: +886-3-578-2439  
Email: sales@zyxel.com.tw  
http://www.zyxel.com  
http://www.zyxel.com.tw

#### Denmark

Tel: +45 39 55 07 00 Fax: +45 39 55 07 07  
Email: sales@zyxel.dk  
http://www.zyxel.dk

#### Finland

Tel: +358-9-4780 8400 Fax: +358-9-4780 8448  
Email: sales@zyxel.fi  
http://www.zyxel.fi

#### France

Tel: +33 (0)4 72 52 97 97 Fax: +33 (0)4 72 52 19 20  
Email: info@zyxel.fr  
http://www.zyxel.fr

#### Germany

Tel: +49 2405 6909 0 Fax: +49 2405 6909 99  
Email: sales@zyxel.de  
http://www.zyxel.de

#### North America

Tel: +1-800-255-4101, +1-714-632-0882  
Fax: +1-714-632-0858  
Email: sales@zyxel.com  
http://www.us.zyxel.com

#### Norway

Tel: +47 22 80 61 80 Fax: +47 22 80 61 81  
Email: sales@zyxel.no  
http://www.zyxel.no

#### Spain

Tel: +34 902 195 420 Fax: +34 913 005 345  
Email: sales@zyxel.es  
http://www.zyxel.es

#### Sweden

Tel: +46 31 744 7700 Fax: +46 31 744 7701  
Email: sales@zyxel.se  
http://www.zyxel.se