

P-660R-T Series

ADSL2+ Ethernet Gateway

Quick Start Guide

Version 3.40
6/2005

The logo for ZyXEL, featuring the word "ZyXEL" in a bold, blue, sans-serif font. The "Zy" is lowercase and the "XEL" is uppercase. The letters are closely spaced and have a slight shadow effect.

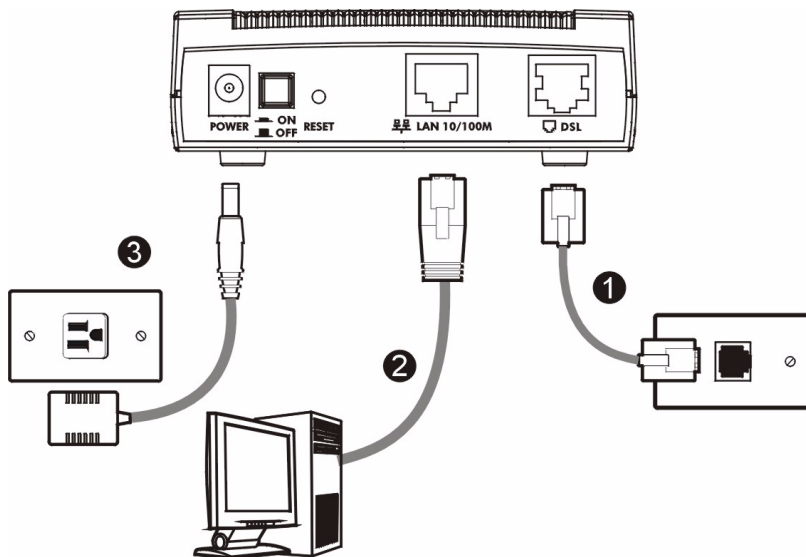
Overview

The Prestige 660R-T (P-660R-T) ADSL2+ Ethernet gateway is the ideal device for small networks connecting to the Internet via ADSL.

See your User's Guide for background information on all features.

1 Hardware Connections

If you prefer to see a multi-media animation of how to make hardware connections, see the included CD.



- 1 DSL:** Connect the Prestige to a telephone jack using a telephone wire.
- 2 LAN:** Use an Ethernet cable to connect a computer to the LAN port for initial configuration and/or Internet access.
- 3 POWER:** Use the included power adaptor to connect the POWER socket to an appropriate power source (see the User's Guide for power adaptors specifications by region).

After you've made the connections, push in the power button to turn on the Prestige. Look at the front panel LEDs. The **PWR/SYS** LED blinks while performing system testing. The **PWR/SYS** then turn steady on if the testing is successful. The **LAN** LED turns on if the LAN port is properly connected.

2 Configuration for Internet Access

You may configure the Prestige for Internet access in any *one* of these ways:

- **Configuration Genie**

- **Zero Configuration**
- **Web Configurator Internet Access Wizard**

Note: Configuration genie or Zero configuration are only able to configure the device automatically for Internet access if you are using **PPPoE**, **PPPoA** or **ENET ENCAP** encapsulation with a dynamically-assigned IP address from your ISP.

If you're not using these Internet access settings, then use the **Web Configurator Internet Access Wizard** to manually configure the device.

You will need your Internet access information such as user name and password if given by your ISP.

INFORMATION From ISP	ENCAPSULATION METHOD YOU ARE USING
None	RFC1483 in bridged mode with a dynamic IP address or ENET ENCAP with a dynamic IP address
An IP address only	RFC1483 in routing mode with a static IP address
A user name and password (and an IP address)	PPPoA or PPPoE encapsulation (with a static IP address)
An IP address, subnet mask and a gateway IP address	ENET ENCAP with a static IP address

2.1 Configuration Genie

From the included CD, click "Multimedia Auto Provisioner" (the installation and configuration assistant) and then click "Installation Tutorial". After you've viewed the tutorial, click "Configuration Genie" at the end of the installation tutorial or from "Multimedia Auto Provisioner" in the CD.

2.2 Zero Configuration

Launch your web browser and navigate to any web site (for example, www.zyxel.com). The Prestige automatically detects and configures your Internet connection. This may take about two minutes.



If you have a **PPPoE** or **PPPoA** connection, a screen displays prompting you to enter your Internet account information. Enter the username, password and/or service name exactly as provided. Click **Apply**.

Enter the system password and username and password exactly as your ISP assigned them.

System Password

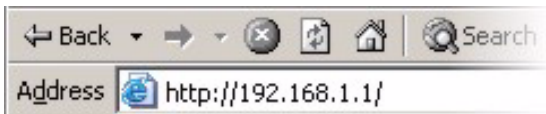
User Name

Password

2.3 Web Configurator Internet Access Wizard

2.3.1 Accessing the Web Configurator

1 Launch your web browser. Enter "192.168.1.1" as the web site address.

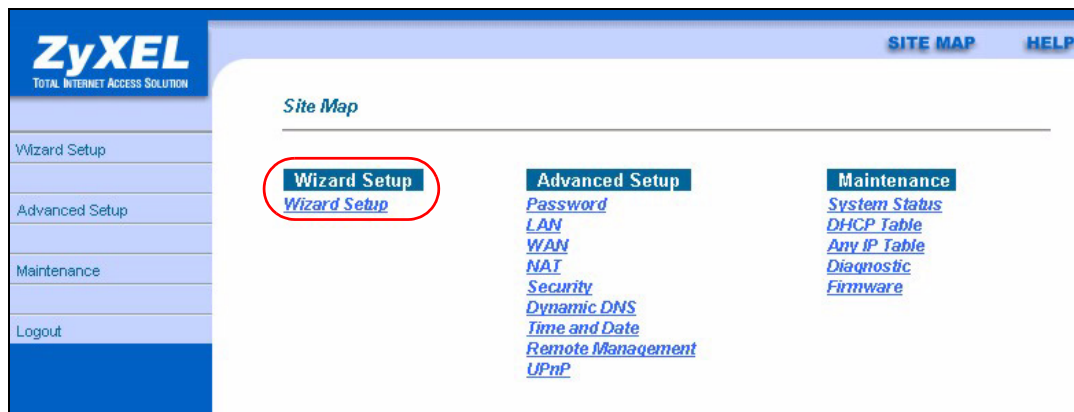
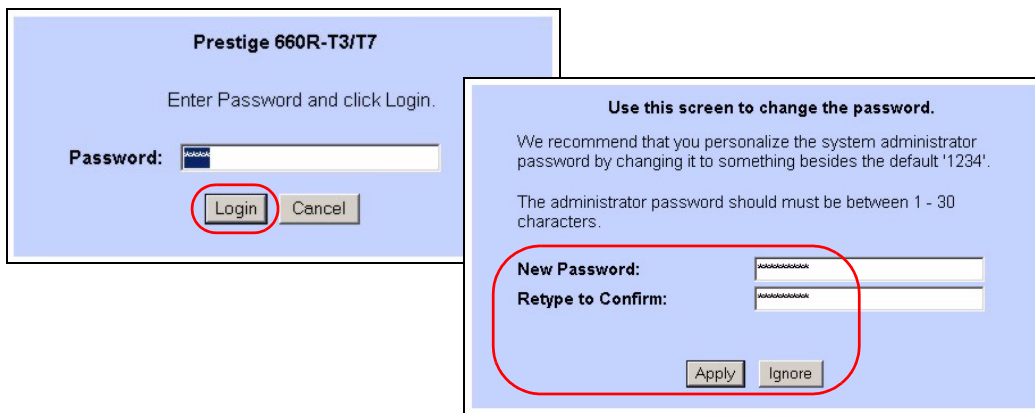


Note: If you do not see the next screens, then please read [Section 4.1 on page 8](#).

2 Click **Login**.

3 Type a new password (retype it to confirm) and click **Apply**. Otherwise click **Ignore**. You then see the main web configurator screen.

4 In the **Site Map** screen, click **Wizard Setup**.



2.3.2 Internet Access Setup

1 Configure the Internet access settings in this step. The wizard screens vary depending on the **Mode** and **Encapsulation** you chose in the first wizard screen.

Note: Enter the Internet access information given to you by your ISP exactly in each wizard screen. If not given, leave the fields set to the default.

RFC 1483

A) Select **Routing** if your ISP gave you an IP address and allows multiple computers to share an Internet account. Otherwise, select **Bridge**. Then select **RFC 1483**.

B) Click **Next**.

C) If you selected **Routing**, enter the IP address given by your ISP.

D) If you selected **Routing**, select **SUA Only** when you have one public IP address, **Full Feature** when you have more than one public IP address (for translation) or **None** to disable NAT.

E) Click **Next**.

ENET ENCAP

A) Select **Routing**, then **ENET ENCAP**.

B) Click **Next**.

C) If your ISP gave you an IP address, subnet mask and gateway address, select **Static IP address** and enter them. Otherwise, select **Obtain an IP Address Automatically**.

D) Select **SUA Only** if you have one public IP address, **Full Feature** if you have more than one public IP address (for translation) or **None** to disable NAT.

E) Click **Next**.

PPPoE

- A) Select **Routing**, then **PPPoE**.
- B) Click **Next**.
- C) Enter the service name, username and password given by your ISP.
- D) If your ISP gave you an IP address, select **Static IP address** and enter it. Otherwise, select **Obtain an IP Address Automatically**.
- E) Select **Nailed-Up Connection** to have your connection up all the time. Otherwise, select **Connect on Demand** and specify an idle time-out period (in seconds) in the **Max. Idle Timeout** field.
- F) Select **SUA Only** if you have one public IP address, **Full Feature** if you have more than one public IP address (for translation) or **None** to disable NAT.
- G) Click **Next**.

Wizard Setup - ISP Parameters for Internet Access

Mode: **A** Routing

Encapsulation: PPPoE

Multiplex: LLC

Virtual Circuit ID: VPI: 8, VCI: 35

B Next

Wizard Setup - ISP Parameters for Internet Access

Service Name: []

User Name: **C** user@domain

Password: []

IP Address: **D** Obtain an IP Address Automatically (selected), Static IP Address: 0.0.0.0

Connection: **E** Connect on Demand: Max Idle Timeout: [] sec, Nailed-Up Connection (selected)

Network Address Translation: SUA Only **F**

Back Next **G**

PPPoA

- A) Select **Routing** if your ISP allows multiple computers to share an Internet account. Otherwise, select **Bridge**. Then select **PPPoA**.
- B) Click **Next**.
- C) Enter the username and password given by your ISP.
- D) If your ISP gave you an IP address, select **Static IP address** and enter it. Otherwise, select **Obtain an IP Address Automatically**.
- E) Select **Nailed-Up Connection** to have your

Wizard Setup - ISP Parameters for Internet Access

Mode: **A** Routing

Encapsulation: PPPoA

Multiplex: LLC

Virtual Circuit ID: VPI: 8, VCI: 35

B Next

Wizard Setup - ISP Parameters for Internet Access

User Name: **C** user

Password: []

IP Address: **D** Obtain an IP Address Automatically (selected), Static IP Address: 0.0.0.0

Connection: **E** Connect on Demand: Max Idle Timeout: [] sec, Nailed-Up Connection (selected)

Network Address Translation: SUA Only **F**

Back Next **G**

connection up all the time. Otherwise, select **Connect on Demand** and specify an idle time-out period (in seconds) in the **Max. Idle Timeout** field.

F) If you selected **Routing**, select **SUA Only** when you have one public IP address, **Full Feature** when you have more than one public IP address (for translation) or **None** to disable NAT.

G) Click **Next**.

- 2 Verify your LAN and WAN settings and click **Save Settings**.
- 3 The Prestige automatically tests the connection to the computer(s) connected to the LAN port. To test the connection from the Prestige to the ISP, click **Start Diagnose**. Otherwise click **Return to Main Menu** to go back to the main screen.

Wizard Setup - ISP Parameters for Internet Access

WAN Information:
 Mode: **Routing**
 Encapsulation: PPPoE
 Multiplexing: LLC
 VPI/VCI: 8/35
 Service Name:
 User Name: user@domain
 Password: *****
 IP Address: **Obtain an IP Address Automatically**
 Network Address Translation: **SUA Only**
 Connection: **Nailed-Up Connection**

LAN Information:
 IP Address: 192.168.1.1
 IP Mask: 255.255.255.0
 DHCP: **ON**
 Client IP Pool Starting Address: 192.168.1.33
 Size of Client IP Pool: 32

Buttons: Change LAN Configuration, Save Settings

Wizard Setup - ISP Parameters for Internet Access

LAN connections
 Test your Ethernet Connection **PASS**

WAN connections
 Test ADSL synchronization **PASS**
 Test ADSL(ATM OAM) loopback test **PASS**
 Test PPP/PPPoE server connection **PASS**
 Ping default gateway **PASS**

Buttons: Start Diagnose, Return to Main Menu

3 NAT

NAT (Network Address Translation - NAT, RFC 1631) means the translation of an IP address in one network to a different IP address in another. For example, you could translate one public IP address to multiple private IP addresses on your LAN (SUA Only). You must select **Routing** mode to use routing features such as NAT.

Click **Advanced Setup** and then **NAT** to open the **NAT-Mode** screen. Select **SUA Only** if you have one public IP address and **Full Feature** if you have multiple public IP addresses (for address translation).

NAT - Mode

Network Address Translation

None

SUA Only [Edit Details](#)

Full Feature [Edit Details](#)

Apply

If you have servers on your LAN, configure an SUA server set to have them visible to the outside. From the **NAT - Mode** screen click **Edit Details** and fill in the fields as shown.

NAT - Edit SUA/NAT Server Set

	Start Port No.	End Port No.	IP Address
1	All ports	All ports	0.0.0.0
2	0	0	0.0.0.0
3	0	0	0.0.0.0
4	0	0	0.0.0.0
5	0	0	0.0.0.0
6	0	0	0.0.0.0
7	0	0	0.0.0.0
8	0	0	0.0.0.0
9	0	0	0.0.0.0
10	0	0	0.0.0.0
11	0	0	0.0.0.0
12	0	0	0.0.0.0

Buttons: Save, Reset

4 Troubleshooting

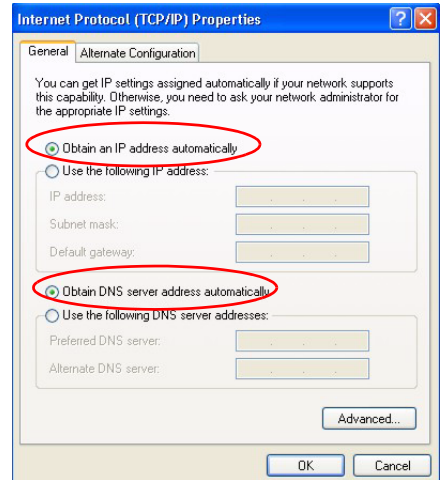
PROBLEM	CORRECTIVE ACTION
None of the LEDs turn on when you connect the Prestige's power.	<p>Make sure that you have the correct power adaptor connected to the Prestige, it is plugged into an appropriate power source and the Prestige is turned on.</p> <p>Check all cable connections. If the LEDs still do not turn on, you may have a hardware problem. In this case, you should contact your local vendor.</p>
Cannot access the Prestige from my computer.	<p>Check the cable connection from your computer to the Prestige.</p> <p>Make sure your computer's IP address is in the same subnet as the Prestige's IP address (see Section 4.1 on page 8).</p> <p>Ping the Prestige from a computer on the LAN. Make sure your computer's Ethernet adapter is installed and functioning properly. In the computer, click Start, (All) Programs, Accessories and then Command Prompt. In the Command Prompt window, type "ping" followed by the Prestige's LAN IP address (192.168.1.1 is the default) and then press [ENTER]. The Prestige should reply; otherwise see Section 4.1 on page 8.</p> <p>If the Prestige's IP address has changed, then enter the new one as the URL.</p> <p>Use Internet Explorer 6.0 and later or Netscape Navigator 7.0 and later with JavaScript enabled.</p> <p>Make sure you enter the password correctly (the field is case sensitive).</p> <p>If you've forgotten the Prestige's password, use the RESET button. Press the button in for about 10 seconds (or until the PWR/SYS LED starts to blink), then release it. It returns the Prestige to the factory defaults (password is 1234, LAN IP address 192.168.1.1 etc.; see your User's Guide for details).</p>
Cannot access the Internet.	<p>Verify the Internet connection settings in the wizard. Make sure you entered the correct user name and password if you are using PPPoE or PPPoA.</p> <p>The Prestige stores the Internet connection settings that it detects using zero configuration. Reset the Prestige to the factory defaults or manually configure it for Internet access if you connect it to another DSL line with a different VPI and VCI.</p>

4.1 Set Up Your Computer's IP Address

This section shows you how to set your Windows NT/2000/XP computer to automatically get an IP address. This ensures that your computer can connect with your Prestige. Refer to your *User's Guide* for detailed IP address configuration for other Windows and Macintosh computer operating systems.

- 1 In Windows XP, click **start, Control Panel**. In Windows 2000/NT, click **Start, Settings, Control Panel**.
- 2 In Windows XP, click **Network Connections**. In Windows 2000/NT, click **Network and Dial-up Connections**.
- 3 Right-click **Local Area Connection** and then click **Properties**.

- 4 Select **Internet Protocol (TCP/IP)** (under the **General** tab in Windows XP) and click **Properties**.
- 5 The **Internet Protocol TCP/IP Properties** screen opens (the **General** tab in Windows XP).
- 6 Select the **Obtain an IP address automatically** and **Obtain DNS server address automatically** options.
- 7 Click **OK** to close the **Internet Protocol (TCP/IP) Properties** window.
- 8 Click **Close (OK** in Windows 2000/NT) to close the **Local Area Connection Properties** window.
- 9 Close the **Network Connections** screen.



Viewing Your Product's Certifications

- 1 Go to www.zyxel.com.
- 2 Select your product from the drop-down list box on the ZyXEL home page to go to that product's page.
- 3 Select the certification you wish to view from this page.