

Prestige 153X

WAN Bridge/Router



Bringing Digital leased line connection to your LAN has never been simpler, more convenient or more cost-effective. The ZyXEL Prestige 153X is your complete solution for WAN applications such as Corporate Internet Access and LAN-to-LAN.

WAN Network Connectivity

- 3 Serial Port Connections with 2 of which support both Async or Sync transmission and 1 of which supports Async transmission only
- The Sync WAN port with DTE speeds up to 256Kbps can connect to Fractional T1/E1 through external CSU/DSU
- The Async WAN port with DTE speeds up to 230.4Kbps can connect to PSTN/ISDN through external modem or TA

Internet Access

- PPP/MP
- Dial-on-Demand and Bandwidth-on-Demand provides flexible bandwidth when needed
- BACP for dynamic bundling of WAN connection
- Supports Stac Data Compression
- Prestige's Single User Account (SUA) / Network Address Translation (NAT) enables multiple users to access the Internet simultaneously while paying for one single IP address
- Using SUA and dynamic IP address assignment, Multiple Single User Account allows access to the Internet and the corporation's network at the same time. It also provides a way to store a backup configuration for an Internet account.
- Digital leased line dial backup

Network Management and Control

- Menu driven user interface for easy network management
- Local and remote console via Telnet
- Integrated SNMP (Simple Network Management Protocol) provides the ability to monitor usage and troubleshooting from corporate site
- DHCP (Dynamic Host Configuration Protocol) server is easy to configure and manage IP address for DHCP client on the LAN
- Call Detail Records feature provides efficient tracking of incoming and outgoing calls
- Flash EPROM for easy firmware upgrades
- Prestige Web Configurator (PWC) for easy installation and configuration
- Supported Zynos with high flexibility for configuration

LAN-to-LAN Connectivity

- Multi-Protocol Routing: IP and IPX[®]
- Transparent Bridging
- RIP-2: routing domains, external route tags, next hop addresses, and multicasting
- "Spoofing" saves WAN connection costs
- Compatible with Ascend, Cisco and other enterprise routers
- Call Control Management: Black List, Call Budget, Call History

Robust Security Features

- RADIUS (Remote Authentication Dial-in User Service) allows a RADIUS server to authenticate the Remote Dial-in user's calls
- Password Protected System Management Terminal
- PAP (Password Authentication Protocol)
- CHAP (Challenge Handshake Authentication Protocol)
- CLID (Calling Line ID)
- MS CHAP
- Call-Back with Password Protection
- Firewall Filtering for controlled access to and from your network

Physical Interfaces

- Ethernet LAN connection: 10 Base-T
- one RS-232 interface for WAN connection
- two RS-449/V.35 options for WAN connection
- RS-232 Interface for local configuration and management

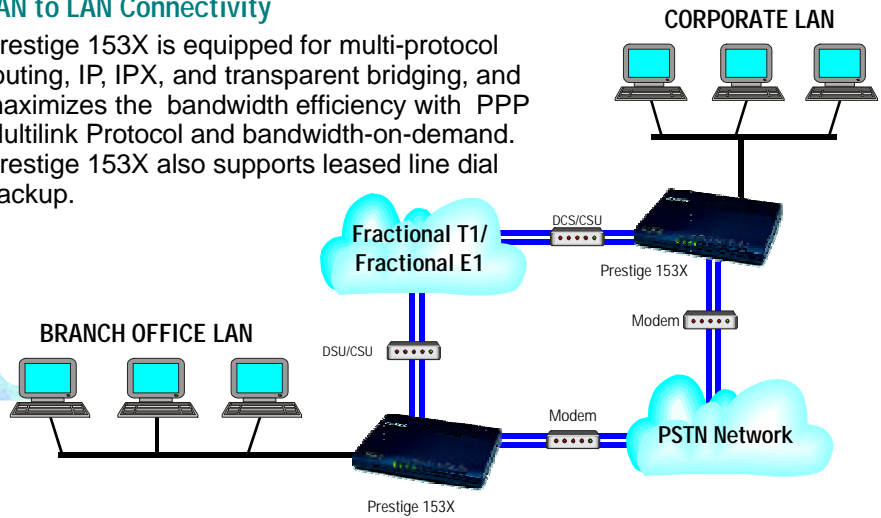
US FCC and European CE approved. Specifications are subject to change without notice. All trademarks are the property of their respective owners.

Prestige 153X

WAN Bridge/Router Applications

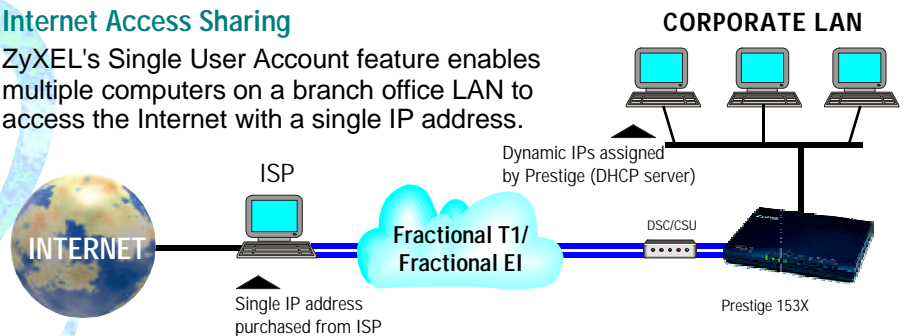
LAN to LAN Connectivity

Prestige 153X is equipped for multi-protocol routing, IP, IPX, and transparent bridging, and maximizes the bandwidth efficiency with PPP Multilink Protocol and bandwidth-on-demand. Prestige 153X also supports leased line dial backup.



Internet Access Sharing

ZyXEL's Single User Account feature enables multiple computers on a branch office LAN to access the Internet with a single IP address.



ZyXEL
TOTAL INTERNET ACCESS SOLUTION



<http://www.zyxel.com>