

Prestige 128L

ISDL Bridge/Router



Bringing the power of ISDL to your LAN has never been simpler, more convenient or more cost-effective. The ZyXEL Prestige 128L is your ideal solution for Internet Access and LAN-to-LAN applications.

Network Interface Compatibility

- Capable of transmitting data at 128Kbps over 18,000 feet of twisted copper pair wire
- Data can be 128K/64Kbps compatible with most of the commercially available 2B1Q band ISDN BRI Terminal adapters, bridges and routers
- Adaptive echo cancellation and equalization
- Automatic polarity adaption and gain control
- Conforms to ANSI T1.601 standard and ETSI DTR/TM 3002
- 2B1Q (2 binary, 1 quaternary) four level line code
- 80KHz symbol rate
- Meet transmission requirements through ANSI loop#1 to ANSI loop#15
- Server or client mode by configuration

Protocols and Compression

- PPP
- Supports Stac® Data Compression
- Supports ZyXEL Network operating System (ZyNOS™) which provides high level flexibility for configuration operations

Internet Access

- The ideal high-speed ISDL Internet access solution for branch offices
- Prestige's Single User Account (SUA) / Network Address Translation (NAT) enables multiple users to access the Internet simultaneously while paying for one single IP address

LAN-to-LAN Connectivity with Multi-Protocol Support

- Multi-Protocol Routing: IP and IPX®
- Transparent Bridging
- RIP-2: routing domains, external route tags, next hop addresses, and multicasting
- Compatible with Ascend ISDL solution

Network Management and Control

- Menu driven user interface for easy network management
- Local and remote console via Telnet
- Integrated SNMP (Simple Network Management Protocol) provides the ability to monitor usage and troubleshooting from corporate site
- DHCP (Dynamic Host Configuration Protocol) server is easy to configure and manage to IP address for DHCP client, Windows 95/NT on the LAN
- Flash EPROM for easy firmware upgrades
- Prestige Web Configurator (PWC) for easy setup and management

Security Features

- Password Protected System Management Terminal
- PAP (Password Authentication Protocol)
- CHAP (Challenge Handshake Authentication Protocol)
- Firewall Filtering for controlled access to and from your network

Physical Interfaces

- Ethernet LAN connection: 10 Base-T and AUI
- Standard BRI U interface: RJ-45

US FCC, Canadian IC, and European CE approved. Specifications are subject to change without notice. All trademarks are the property of their respective owners.

ZyXEL Communications Corp.
6 Innovation Road II, Science-Based Industrial Park
Hsinchu, Taiwan 300, R.O.C.
Phone: 886-3-5783942 ♦ Fax: 886-3-5782439
E-mail: sales@zyxel.com.tw, support@zyxel.com.tw

ZyXEL
ACCESSING INTERNET & INTRANET

ZyXEL Communications, Inc.
4920 E. La Palma Avenue, Anaheim, CA 92807
Toll-free: 1-800-255-4101 ♦ Fax: 1-714-693-8811
E-mail: sales@zyxel.com, support@zyxel.com

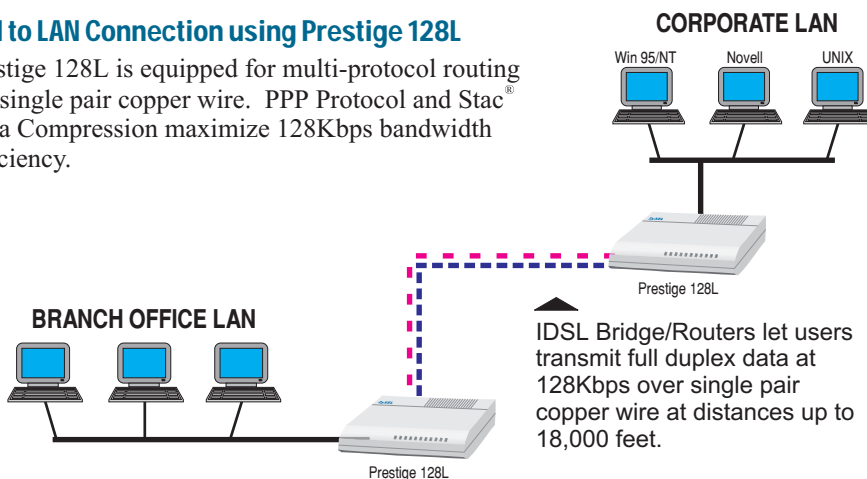
Prestige 128L

IDSL Bridge/Router Applications

Prestige 128L IDSL Bridge/Routers allow users to easily extend their LAN-to-LAN connection over a 2-wire leased line and transmit full 128Kbps BRI data rate at a distance of up to 18,000 feet. Users can configure the P128L as an IDSL server which will provide 2B1Q line coding through a U-interface loop on the side of the host LAN. The remote LAN side for IDSL service can consist of a P128L, which will be configured as a client, or any other IDSL client type bridge/routers.

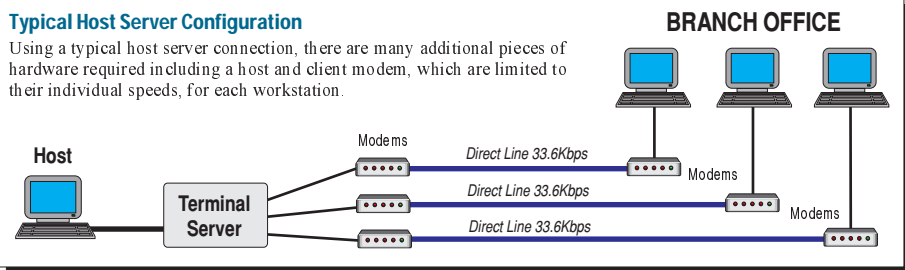
LAN to LAN Connection using Prestige 128L

Prestige 128L is equipped for multi-protocol routing via single pair copper wire. PPP Protocol and Stac® Data Compression maximize 128Kbps bandwidth efficiency.



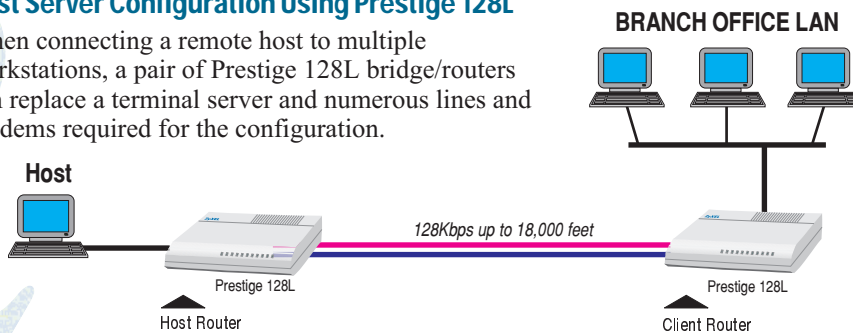
Typical Host Server Configuration

Using a typical host server connection, there are many additional pieces of hardware required including a host and client modem, which are limited to their individual speeds, for each workstation.



Host Server Configuration Using Prestige 128L

When connecting a remote host to multiple workstations, a pair of Prestige 128L bridge/routers can replace a terminal server and numerous lines and modems required for the configuration.



ACCESSING INTERNET & INTRANET

<http://www.zyxel.com>