

ZyXEL

TOTAL INTERNET ACCESS SOLUTION

Omni 56K Modem

Contents

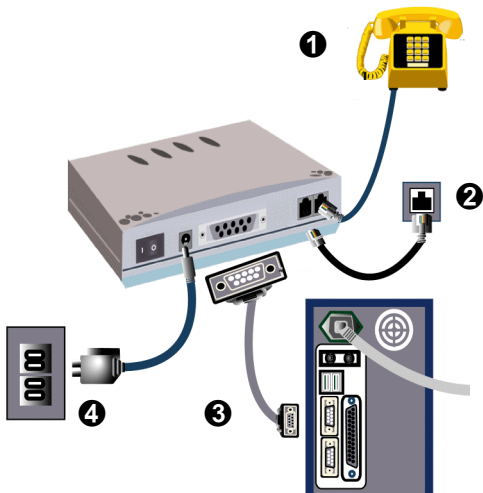
1. MAKING CONNECTION	
HARDWARE INSTALLATION.....	2
SOFTWARE INSTALLATION.....	4
2. SETTING UP FOR INTERNET CONNECTION	
INSTALLING TCP/IP.....	12
CONFIGURING TCP/IP	14
CREATING A DIAL-UP CONNECTION.....	15
3. BITWARE INSTALLATION	
INSTALLING BITWARE	16

Read Me First

1. Making Connection

Hardware Installation

- 1 Connect your modem to your analog phone or fax.
- 2 Use the included phone line to connect to the phone jack on the wall.
- 3 Plug one end of your RS-232 connectors to your modem and another end to your PC's serial port.
- 4 Use the included power adapter to connect your modem to the outlet.



Note 1: Before using RS-232 to connect your modem to your PC, please find the COM port on the back of your PC to determine the pin type of connector you need.

Note 2: Be sure to use the power adapter included in your modem package as your power supply adapter. If you use the one not appropriate for the ZyXEL Omni modem, your new modem could be damaged.

Software Installation

If Plug and Play function is supported by your operation system such as Windows 95/98/2000/NT, when you plug the RS-232 cable attached to your Omni modem to your computer, the Plug and Play function in the operating system will automatically detect. Then, follow the instructions in this section to complete software installation.

If Plug and Play function is not supported by your operation system, you may go to the next section to install your INF files manually.

Note: The information in the attached CD-ROM is also available on ZyXEL's web site at <http://www.zyxel.com> .

Installing by Plug-and-Play



Step 1. Turn on your Modem. Be sure your PC is already powered on before turning on your modem. The plug and play function of your Windows will detect your modem and show an installation wizard as left. Click Next to continue.

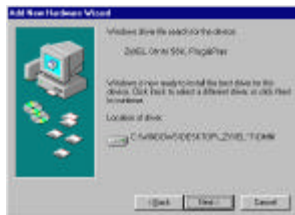
Note: If your Windows system doesn't detect your modem automatically, you may turn off your modem (or unplug the RS-232 cable) and reboot your Windows system, then try the above Step 1 again; or, go to the next section to install manually.



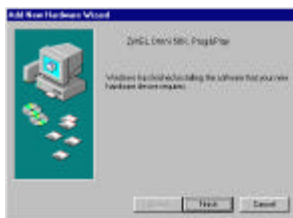
Step 2. Click **Next** to accept the default selection.



Step 3. Insert the included CD into your CD-ROM driver, select “CD-ROM drive” and then click **Next**.



Step 4. The installation wizard has found the location of your INF files. Click **Next** to continue.



Step 5. ZyXEL Omni modem has been successfully installed in your computer. Click **Finish** then follow the wizard to complete the installation.

Installing Manually

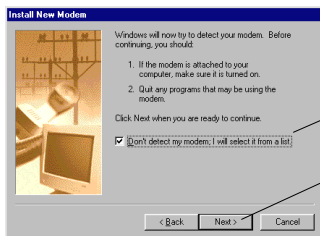
Follow the steps below to install your INF files manually.

Step 1. Be sure your modem is powered on.

Step 2. From **Start** select **Settings** to enter **Control Panel**. Double-click on the **Modems** icon as shown below, then click the **Add** button.



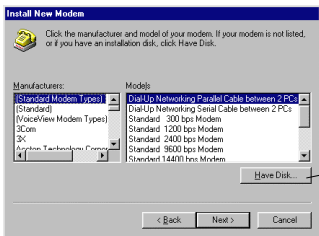
Step 3. Select "Don't detect my modem; I will select form a list." Then, click **Next** to continue.



1. Select this check box.

2. Click Next to continue.

Step 4. Click **Have Disk**, then follow the instructions on the following illustrations:



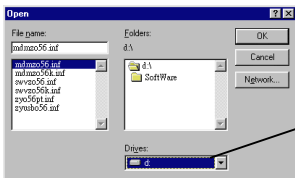
Click here to continue.

- Insert the CD that comes with your device package.
- Click **Browse**, select your CD-ROM drive to find the directory where your INF files located.



Use Browse to find the location of the updated INF file.

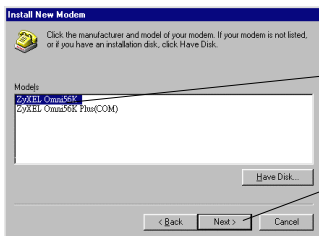
- Select the CD-ROM driver, then click **OK** install INF files.



Select your CD-ROM drive (here is D:), then you will see the next display.

Note: You also can download updated INF files from ZyXEL's FTP, BBS, or Web Site at <http://www.zyxel.com/>.

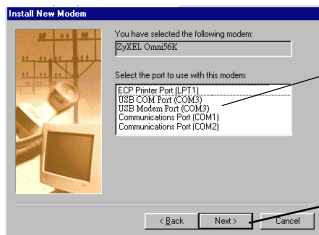
Step 5. You will see a screen as shown below, select the model of your modem, then click **Next** to continue.



1. Select the model of your modem, then click **Next** to continue

2. Click **Next** to continue

Step 6. Select the COM port your new device connected. Then Click **Next**.



1. Select the COM port your new modem connected. If your modem is connecting to COM1 then select COM1.

2. Click **Next** to continue

Step 7. Please wait for a while to install INF files. At this moment, if see a New Device Installation Wizard for Wave Device of Voice Modem, you can either follow the installation wizard to install this device or click **Cancel** to exit.

Click **Finish** to complete INF files installation. Then you will see a screen as shown below.

Now, click **OK** to exit the INF files installation.



The ZyXEL Omni modem has been successfully installed in your PC.

Click **OK** to exit the INF files

For more information on how to upgrade your modem's firmware, please refer to the *User's Guide for ZyXEL Omni 56K and Omni 56K Plus Modems*.

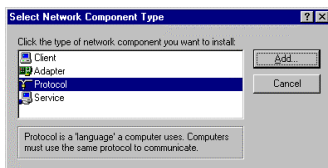
2. Setting up for Internet Connection

For accessing Internet, you must have TCP/IP installed in your computer, configure the TCP/IP, then create a PPP connection.

Installing TCP/IP

If TCP/IP is already installed in your computer, you may go to the next section of configuring the TCP/IP; if not, follow the steps below:

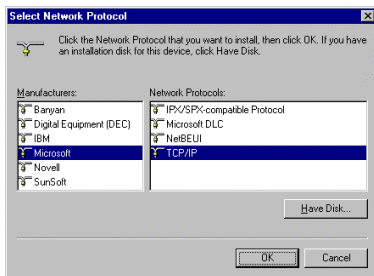
Step 1. From **Start**, select **Settings/Control Panel**, then click on **Network**.



Step 2. Click **Add**.

Step 3. Select **Protocol**, then click on **Add**.

Step 4. Select Microsoft and TCP/IP, then click on OK.



Configuring TCP/IP

If your TCP/IP is already configured, you may go to the next section to setup PPP connection; if not, follow the steps below:

Step 1. From **Start**, select **Settings/Control Panel**, then double-click on **Network**.

Step 2. Select TCP/IP, then click **Properties**.

Step 3. Click on **IP Address** tab. In most cases, you have to select **Obtain an IP address automatically**. If you have an assigned IP address from your ISP, select **Specify an IP address** then enter your IP address and subnet mask.

Step 4. Click on **DNS Configuration** tab, select **Enable DNS**, enter your **Host** name, **Domain** name, and the DNS of your ISP, then click on **OK**.



Creating a Dial-up Connection

At this point, you only have one step away to access Internet. Follow the instructions below to create a new dial-up connection.

- Step 1.** Click on **My Computer** on your desktop, select **Dial-up Networking**, then click on **Make New Connection**.
- Step 2.** Give a name to this Dial-up Connection; for example, Omni modem. Then select your new modem as the device to connect to Internet, then click **Next**.
- Step 3.** Enter your ISP's phone number, then click **Next**.
- Step 4.** Click **Finish**.

Now, you have completed dial-up setup. From now on, you can access Internet by your new device.

3. Bitware Installation

Bitware application is contained in the CD that comes with your modem package. For installing Bitware, insert the CD into your CD-ROM driver. Then, follow the steps below to proceed.

Installing Bitware

Step 1. From **Windows File Manager** to select your CD-ROM driver, then double-click on



Msetup.exe

the **Msetup.exe** program as shown below.

Then, you will see a screen as below:



- Step 2.** Choose Bitware program from the left list-box, and select your Windows system and language in the right side, then click on **Install**. Follow the wizard to complete the installation process.