



How-to Guide  
SAP NetWeaver '04

# How To... Use the BI Java SDK in a Portal iView

Version 1.03 – July 2005

Applicable Releases:  
SAP NetWeaver '04, SP Stack 5 or greater  
BI Java SDK, SP 12 or greater

© Copyright 2005 SAP AG. All rights reserved.

No part of this publication may be reproduced or transmitted in any form or for any purpose without the express permission of SAP AG. The information contained herein may be changed without prior notice.

Some software products marketed by SAP AG and its distributors contain proprietary software components of other software vendors.

Microsoft, Windows, Outlook, and PowerPoint are registered trademarks of Microsoft Corporation.

IBM, DB2, DB2 Universal Database, OS/2, Parallel Sysplex, MVS/ESA, AIX, S/390, AS/400, OS/390, OS/400, iSeries, pSeries, xSeries, zSeries, z/OS, AFP, Intelligent Miner, WebSphere, Netfinity, Tivoli, and Informix are trademarks or registered trademarks of IBM Corporation in the United States and/or other countries.

Oracle is a registered trademark of Oracle Corporation.

UNIX, X/Open, OSF/1, and Motif are registered trademarks of the Open Group.

Citrix, ICA, Program Neighborhood, MetaFrame, WinFrame, VideoFrame, and MultiWin are trademarks or registered trademarks of Citrix Systems, Inc.

HTML, XML, XHTML and W3C are trademarks or registered trademarks of W3C®, World Wide Web Consortium, Massachusetts Institute of Technology.

Java is a registered trademark of Sun Microsystems, Inc.

JavaScript is a registered trademark of Sun Microsystems, Inc., used under license for technology invented and implemented by Netscape.

MaxDB is a trademark of MySQL AB, Sweden.

contained in this document serves informational purposes only. National product specifications may vary.

These materials are subject to change without notice. These materials are provided by SAP AG and its affiliated companies ("SAP Group") for informational purposes only, without representation or warranty of any kind, and SAP Group shall not be liable for errors or omissions with respect to the materials. The only warranties for SAP Group products and services are those that are set forth in the express warranty statements accompanying such products and services, if any. Nothing herein should be construed as constituting an additional warranty.

These materials are provided "as is" without a warranty of any kind, either express or implied, including but not limited to, the implied warranties of merchantability, fitness for a particular purpose, or non-infringement. SAP shall not be liable for damages of any kind including without limitation direct, special, indirect, or consequential damages that may result from the use of these materials. SAP does not warrant the accuracy or completeness of the information, text, graphics, links or other items contained within these materials. SAP has no control over the information that you may access through the use of hot links contained in these materials and does not endorse your use of third party web pages nor provide any warranty whatsoever relating to third party web pages. SAP NetWeaver "How-to" Guides are intended to simplify the product implementation. While specific product features and procedures typically are explained in a practical business context, it is not implied that those features and procedures are the only approach in solving a specific business problem using SAP NetWeaver. Should you wish to receive additional information, clarification or support, please refer to SAP Consulting. Any software coding and/or code lines / strings ("Code") included in this documentation are only examples and are not intended to be used in a productive system environment. The Code is only intended better explain and visualize the

SAP, R/3, mySAP, mySAP.com, xApps, xApp, SAP NetWeaver, and other SAP products and services mentioned herein as well as their respective logos are trademarks or registered trademarks of SAP AG in Germany and in several other countries all over the world. All other product and service names mentioned are the trademarks of their respective companies.  
Data

syntax and phrasing rules of certain coding. SAP does not warrant the correctness and completeness of the Code given herein, and SAP shall not be liable for errors or damages caused by the usage of the Code, except if such damages were caused by SAP intentionally or grossly negligent.

# 1 Scenario

You want to build a Java application that performs analytics on data in an XMLA provider and displays this data in an Enterprise Portal iView. You use the BI Java SDK to custom build this application and you establish the connection with the BI XMLA Connector. All you need for this scenario is included in SAP NetWeaver '04.

For this scenario, be sure you have NetWeaver SP Stack 5 or greater installed. We also recommend that you have the Portal Development Kit (PDK) installed on your portal server.

# 2 Introduction

This document provides detailed instructions on how to use the BI Java SDK and its BI Java Connectors in an Enterprise Portal iView. It contains step-by-step instructions for creating an iView which uses the BI Java SDK's BI XMLA Connector to connect to a BW system and retrieve a list of schemas.

In this document, we focus on the procedure for establishing a connection in the Enterprise Portal environment. After you establish this connection, refer to the tutorials and documentation for the BI Java SDK and the Portal Development Kit (PDK) to expand upon your scenarios.

### 3 The Step By Step Solution

In the first section below you prepare your system, and in the second section you create your iView.

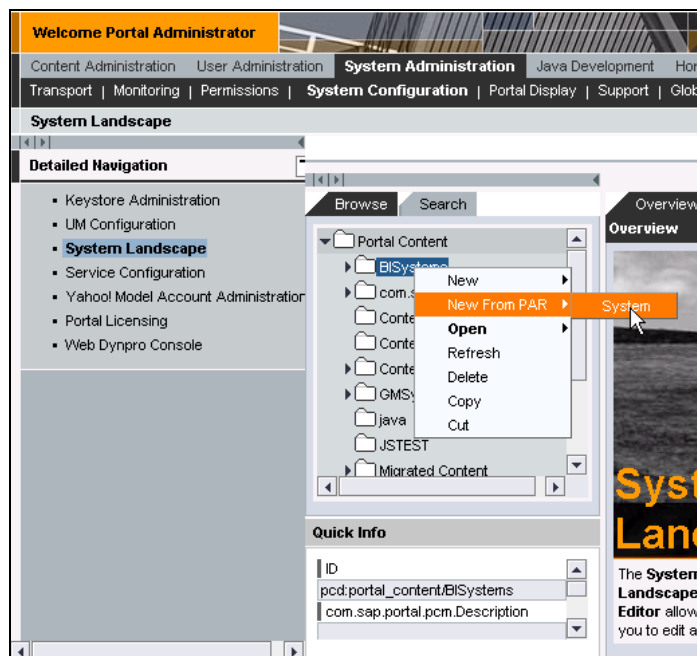
#### 3.1 Prepare the System

This example uses the BI XMLA Connector to connect to an SAP BW system. Preparing your system consists of the following tasks:

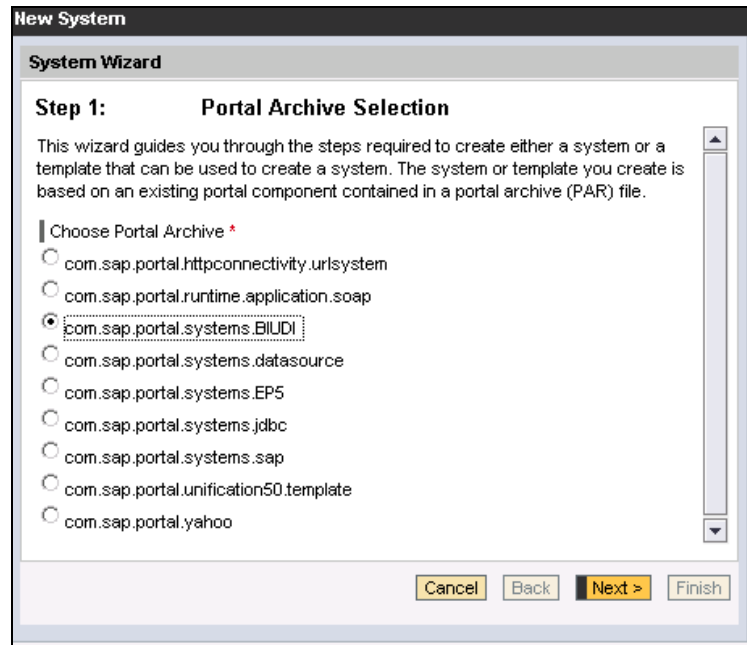
- Create a system in the Portal System Landscape for the XMLA provider to which you wish to connect
- Prepare the connection properties
- Configure the user mapping

To create a new system in the Portal System Landscape:

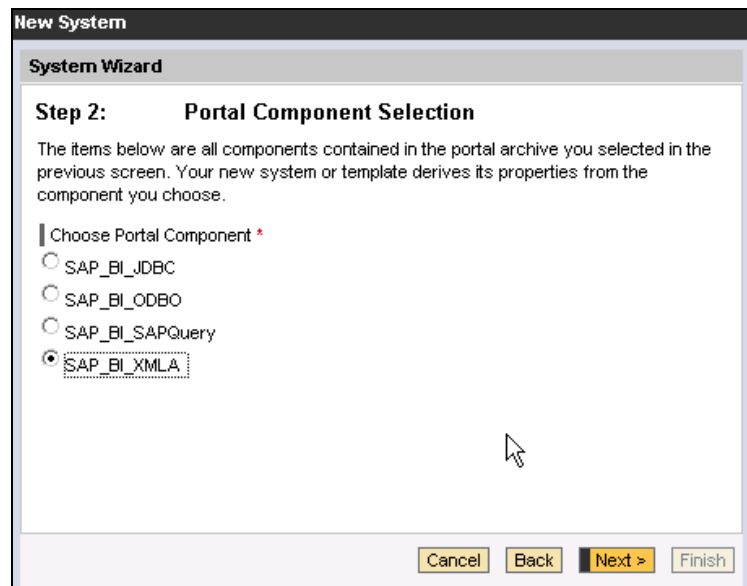
1. Log on to the Enterprise Portal and select *System Administration* → *System Configuration* → *System Landscape*.
2. On the *Browse* tab, select a system in the *Portal Content* folder, right-click, and choose *New From PAR* → *System* from the context menu.



3. In the System Wizard, on the *Portal Archive Selection* screen, select `com.sap.portal.systems.BIUDI`, and press *Next*.



4. On the *Portal Component Selection* screen, select `SAP_BI_XMLA` (this corresponds to the BI XMLA Connector that we use to connect to the BW data source) and press *Next*.



5. On the *General Properties* screen, configure the *System Name* and *System ID* fields with the values of your choice for your data source, and press *Next*.
6. Press *Finish* to create your system.

**New System**

**System Wizard**

**Step 3: General Properties**

System Name \*  
AB5\_XMLA

System ID \*  
AB5\_XMLA

System ID Prefix (Example: com.companyname)

Master Language \*  
English

Description

Cancel Back **Next >** Finish

To configure the connection properties:

7. On the <system name> tab, open the system for edit by choosing *Open the object for editing*, and press *OK*.
8. From the *Property Category* drop-down list, select *ConnectionProperties*, and configure the connection properties as pictured to the right. Enter your own server URL, which takes the format below:

**AB5\_XMLA**

Save Close Preview Refresh Edit Mode | Display: Object

**Property Editor - AB5\_XMLA**

Property Category: ConnectionProperties

Reset All Properties

Datasource Name: default

Server URL: http://us7031.wdf.sap.cor

Statefulness: true

http://server:port/sap/  
bw/xml/soap/xmla

Press *Save* to save the values.

9. From the *Property Category* drop-down list, select *UserManagement*. From the *Logon Method* drop-down list, select *UIDPW*. From the *User Mapping Type* drop-down list, select *admin,user*.

Press **Save** to save the value.

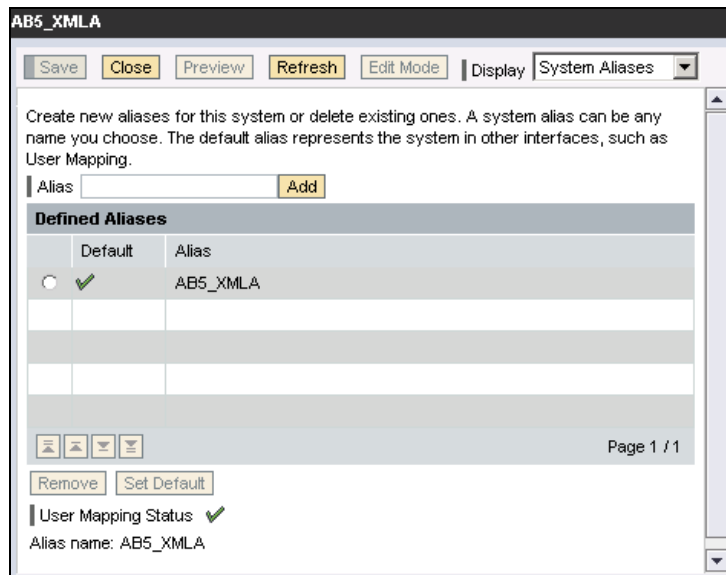


The screenshot shows the 'Property Editor - ABS\_XMLA' window. At the top, there are buttons: Save, Close, Preview, Refresh, Edit Mode, and a Display dropdown menu currently set to 'Object'. Below these, the 'Property Category' is set to 'UserManagement'. There is a 'Reset All Properties' button. The 'Logon Method' is set to 'UIDPW' and the 'User Mapping Type' is set to 'admin,user'.

10. Create a new alias for this system, which will be used to get the connection in the Java source code for your application:

Using the *Display* drop-down list, select *System Aliases* and add an alias to your system. In this example, we name the alias *AB5\_XMLA*.

Press **Save** to save the value.



The screenshot shows the 'System Aliases' window for 'ABS\_XMLA'. It has buttons: Save, Close, Preview, Refresh, Edit Mode, and a Display dropdown menu set to 'System Aliases'. Below the buttons, there is a text area with instructions: 'Create new aliases for this system or delete existing ones. A system alias can be any name you choose. The default alias represents the system in other interfaces, such as User Mapping.' Below this is an 'Alias' input field and an 'Add' button. A table titled 'Defined Aliases' is shown with columns 'Default' and 'Alias'. The first row has a radio button selected under 'Default' and 'AB5\_XMLA' under 'Alias'. Below the table are navigation buttons (back, forward, search, etc.) and a 'Page 1 / 1' indicator. At the bottom, there are 'Remove' and 'Set Default' buttons, and a 'User Mapping Status' section with a green checkmark and the text 'Alias name: AB5\_XMLA'.

To configure user mapping:

11. From the first-level Portal navigation, select *User Administration* → *User Mapping*, and map your Portal user to the user of the newly created system (in this case, the user of the target BW system), also configuring your user name and password for your target system.



Welcome Portal Administrator

Help | Personalize | Log Off

Content Administration | **User Administration** | System Administration | Java Development | Home

Users | Roles | Groups | **User Mapping** | Replication | Import/Export

User Mapping | History | Back | Forward

Detailed Navigation

- User Mapping

Search:  in Users

ID	Name	Edit
Administrator	Administrator	<a href="#">Edit</a>
padmin	Administrator, Portal	<a href="#">Edit</a>
anonymous	anonymous	<a href="#">Edit</a>
jinchen	Chen, Jim	<a href="#">Edit</a>
config_fwkw_service	config_fwkw_service	<a href="#">Edit</a>
Guest	Guest	<a href="#">Edit</a>
jiangsh	jiang, shan	<a href="#">Edit</a>
pcd_service	pcd_service	<a href="#">Edit</a>
ume_service	ume_service	<a href="#">Edit</a>

Page 1 / 1

Logon Data for System - 'Administrator, Portal'

System:

User:

Password:

Administrators, Authenticated Users, Everyone

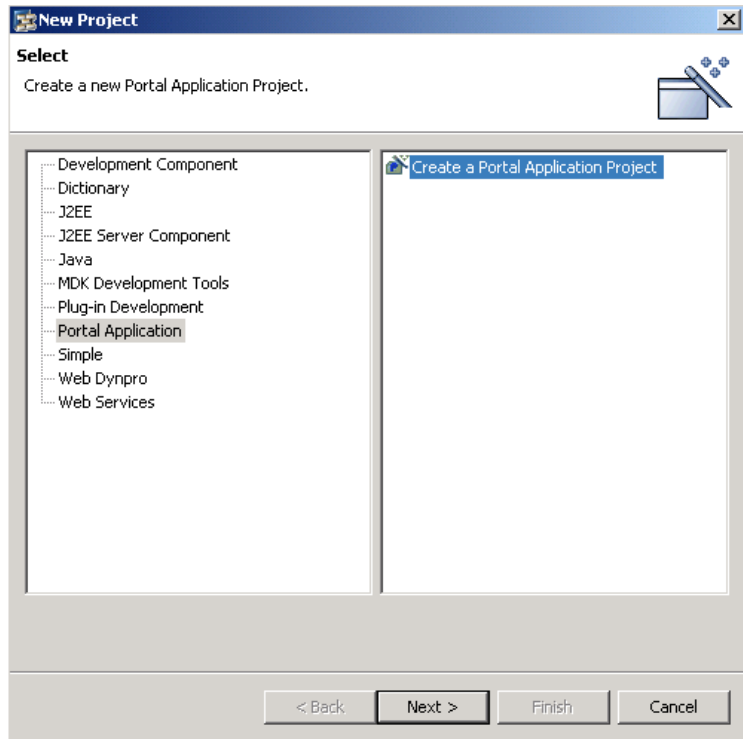
Administrator, com.sap.pdk.JavaDeveloper, eu\_role, super\_a

Now your system is prepared and ready for you to create your iView.

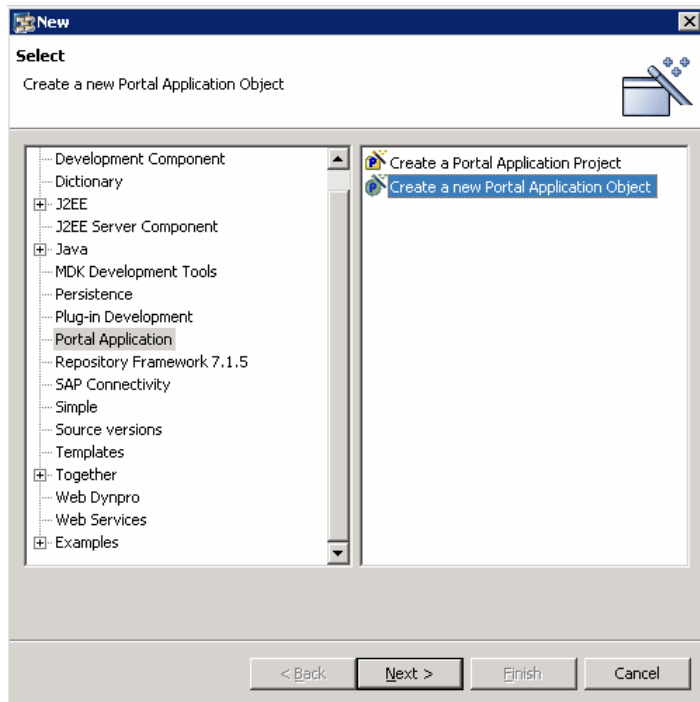
## 3.2 Create the Sample iView

Create a new iView in the SAP NetWeaver Developer Studio:

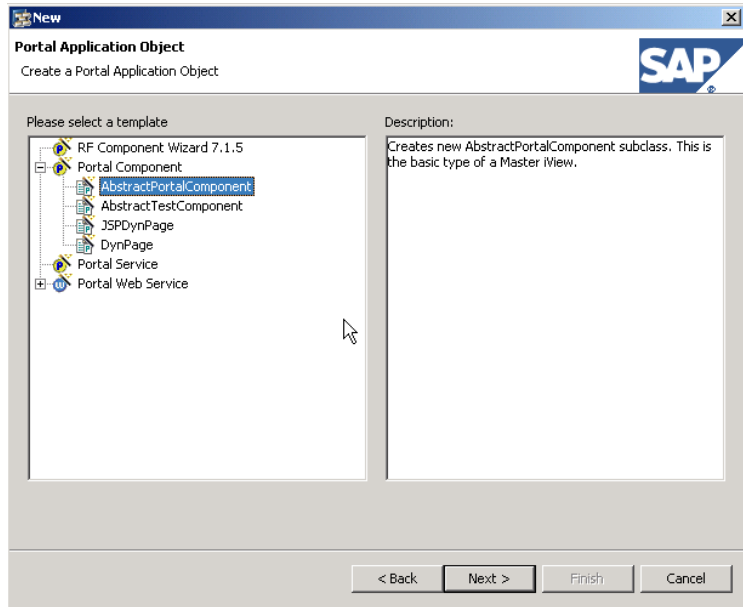
12. In the *New Project Wizard*, select *Portal Application*, choose *Create a Portal Application Project*, and follow the steps to create a project.



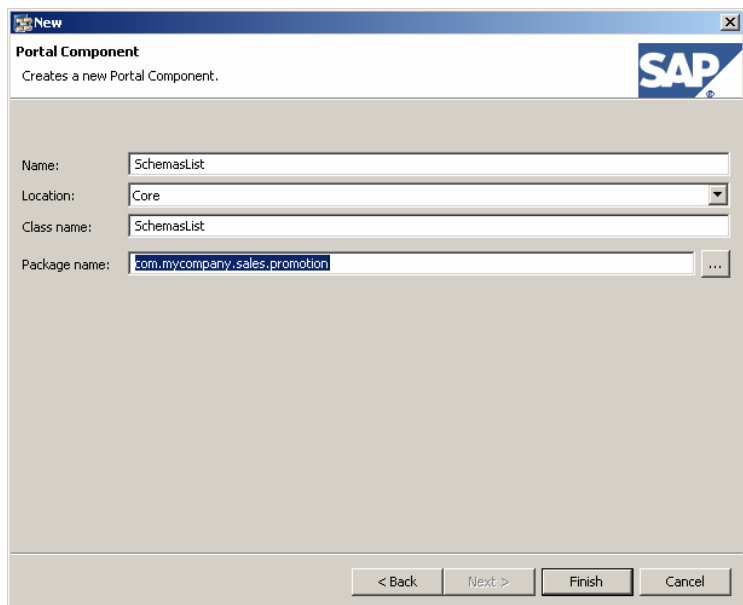
13. In the *Package Explorer*, right-click on the new Portal project, and select *New* → *Other* from the context menu.
14. In the wizard, select *Portal Application*, choose *Create a new Portal Application Object*, and click *Next*.



15. Select your Portal project from the list, and click *Next*.
16. Expand the *Portal Component* node and choose *AbstractPortalComponent* as the template. Click *Next*.



17. Configure values for your Portal component on the *Portal Component* screen, and click *Finish* to create your Portal component.



18. Locate and add required libraries to your project:

- BI Java SDK libraries:

If you don't already have the BI Java SDK, go to:

<your NetWeaver Developer Studio installation  
folder>\eclipse\tools\bi\_sdk\bi\_sdk.zip,

or download it from the SAP Developer Network at <http://www.sdn.sap.com/>.

- Portal Connector Gateway Service library:

com.sap.portal.ivs.connectorserviceapi.jar or  
com.sap.portal.ivs.connectorservice\_api.jar (SP Stack 09 or greater)

If you have the Portal Development Kit installed on your portal server, you can find this library in *Java Development* → *Downloads* → *Portal Libraries* → libraries.zip.

Otherwise, look in:

`http://<server>:<port>/irj/servlet/prt/portal/prtroot/com.sap.  
portal.support.browse.default,`

and then follow this path:

ROOT/WEB-

INF/portal/portalapps/com.sap.portal.ivs.connectorservice/lib

Click the *download* link to download a zip file which contains this jar.

19. In the iView source code, use the Portal Connector Gateway Service to get a connection, specifying the system alias you created above in Section 3.1, Step 10 (AB5\_XMLA in our example). Use the code below as an example to get the connection and retrieve schemas:

```
IConnectorService connectorService;  
IConnectorGatewayService connectorGatewayService;  
IConnection connection;  
try {  
    connectorService =  
        (IConnectorService) PortalRuntime  
            .getRuntimeResources()  
            .getService(  
                IConnectorService.KEY);  
    connectorGatewayService =  
        connectorService.getIConnectorGatewayService();
```

```

ConnectionProperties connectionProperties =
    new ConnectionProperties(
        request.getLocale(),
        request.getUser());
connection =
    connectorGatewayService.getConnection(
        "AB5_XMLA",
        connectionProperties);

IBIOlap olap = ((IBIConnection) connection).getOlap();

List schemas = olap.getSchema();
Schema schema = null;

for (int i = 0; i < schemas.size(); i++) {
    schema = (Schema) schemas.get(i);
    response.getWriter().write(
        "schema: " + schema.getName() + "<br>");
}
connection.close();

} catch (Exception e) {
    e.printStackTrace();
}

```

20. Edit the portalapp.xml file of this iView to add required references:

```

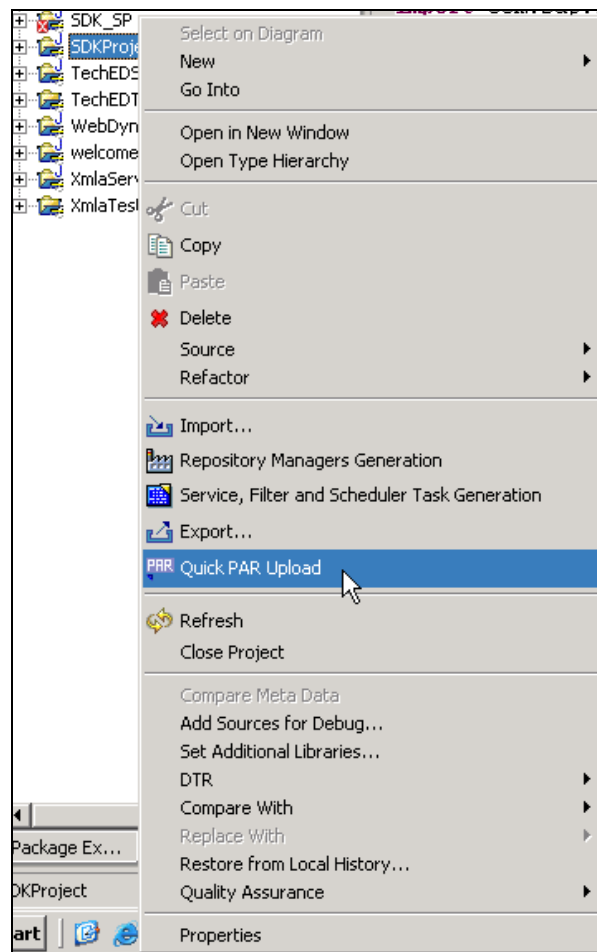
<application-config>
  <property name="SharingReference"
value="SAPJ2EE::library:com.sap.ip.bi.sdk,SAPJ2EE::library:bi~mmr~jmi,SAPJ2
EE::library:bi~mmr~core,SAPJ2EE::library:bi~mmr~db,SAPJ2EE::library:bi~mmr~
cwm_1.0_library,com.sap.portal.htmlb,com.sap.portal.ivs.connectorservice"/>
</application-config>

```

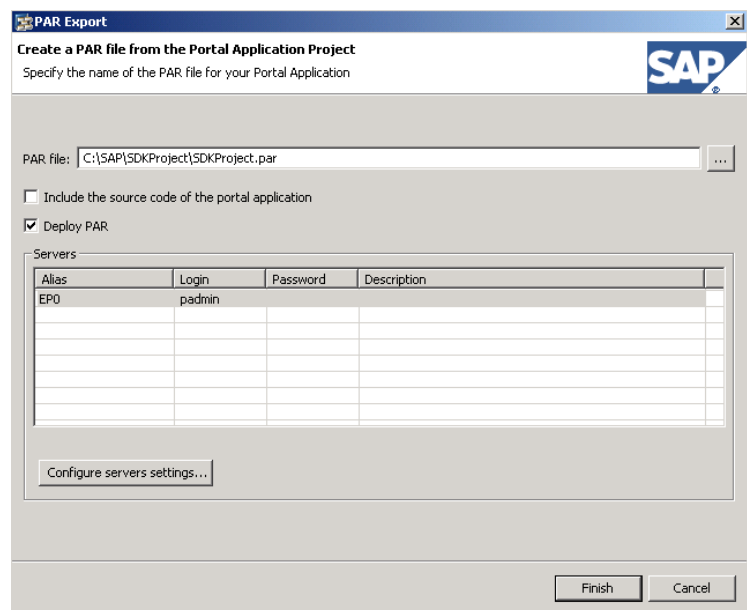
**Note:** You may need to configure your portalapp.xml file with additional properties, such as SecurityZone, as required by your system. See the Portal Development Kit documentation for further details, and a full sample portalapp.xml file in the Appendix of this document.

Build the PAR file and upload it into the Portal:

21. In the *Package Explorer*, from the context menu of your Portal project, select *Quick PAR Upload*.



22. On the *PAR Export* screen, select the *Deploy PAR* checkbox, configure your server settings as needed, and click *Finish*.



Now, you can run your iView, which retrieves a list of schemas in your system. For more information about building and deploying iViews, see the Portal Development Kit documentation.

## 4 Appendix: Source Code

Below is source code for the Portal component class and portalclass.xml files that demonstrate this scenario.

### 4.1 Portal component class

```
package com.mycompany.sales.promotion;

import java.util.List;

import org.omg.cwm.analysis.olap.Schema;

import com.sap.ip.bi.sdk.dac.connector.IBICConnection;
import com.sap.ip.bi.sdk.dac.connector.IBIOlap;
import com.sapportals.connector.connection.IConnection;
import com.sapportals.portal.ivs.cg.ConnectionProperties;
import com.sapportals.portal.ivs.cg.IConnectorGatewayService;
import com.sapportals.portal.ivs.cg.IConnectorService;
import com.sapportals.portal.prt.component.AbstractPortalComponent;
import com.sapportals.portal.prt.component.IPortalComponentRequest;
import com.sapportals.portal.prt.component.IPortalComponentResponse;
import com.sapportals.portal.prt.runtime.PortalRuntime;
public class SchemasList extends AbstractPortalComponent {
    public void doContent (
        IPortalComponentRequest request,
        IPortalComponentResponse response) {
        IConnectorService connectorService;
        IConnectorGatewayService connectorGatewayService;
        IConnection connection = null;
        try {
            connectorService =
                (IConnectorService) PortalRuntime
                    .getRuntimeResources()
                    .getService(
                        IConnectorService.KEY);
            connectorGatewayService =
                connectorService.getIConnectorGatewayService();
            ConnectionProperties connectionProperties =
                new ConnectionProperties(
                    request.getLocale(),
                    request.getUser());
            connection =
                connectorGatewayService.getConnection(
                    "AB5_XMLA",
                    connectionProperties);

            IBIOlap olap = ((IBICConnection) connection).getOlap();

            List schemas = olap.getSchema();
            Schema schema = null;
        } catch (Exception e) {
            response.sendError(500, e.getMessage());
        }
    }
}
```



```

        for (int i = 0; i < schemas.size(); i++) {
            schema = (Schema) schemas.get(i);
            response.getWriter().write(
                "schema: " + schema.getName() + "<br>");
        }

    } catch (Exception e) {
        e.printStackTrace();
    } finally {
        try {
            connection.close();
        } catch (Exception e) {
            e.printStackTrace();
        }
    }
}
}
}

```

## 4.2 portalapp.xml file

**Note:** This example is based on Enterprise Portal version SP Stack 07. Check the Portal Development Kit documentation for more information on these settings.

```

<?xml version="1.0" encoding="utf-8"?>
<application>
    <application-config>
        <property name="SharingReference"
value="SAPJ2EE::library:com.sap.ip.bi.sdk,SAPJ2EE::library:bi~mmr~jmi,SAPJ
2EE::library:bi~mmr~core,SAPJ2EE::library:bi~mmr~db,SAPJ2EE::library:bi~mm
r~cwm_1.0_library,com.sap.portal.htmlb,com.sap.portal.ivs.connectorservice
"/>
    </application-config>
    <components>
        <component name="SchemasList">
            <component-config>
                <property name="ClassName"
value="com.mycompany.sales.promotion.SchemasList"/>
                <property name="SecurityZone" value="com.sap.portal/low_safety"/>
            </component-config>
            <component-profile/>
        </component>
    </components>
    <services/>
</application>

```

[www.sap.com/netweaver](http://www.sap.com/netweaver)